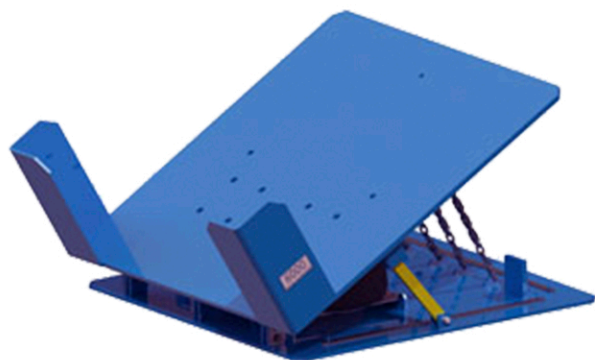




... desde 1979

Mesas de Levante e Inclinación



SOUTHWORTH

ALIGN
PRODUCTION SYSTEMS

01.800.890.0799
www.AGgrupo.mx

LIFT TABLES



Quality Features

For Reliable Performance and Long Service Life



Contoured Legs

With extra width at the pivot point, Southworth's contoured legs combine great strength with lower collapsed height.



Lubricated-for-Life Bushings

All pivot points have hardened pins that operate in lubricated-for-life, virtually maintenance-free bushings.



Heavy-Duty Hoses

All Southworth lifts have heavy-duty hoses with burst strength 600% greater than the hydraulic operating pressure.



Oversize, Low-Pressure Hydraulic Cylinders

Low operating pressure extends the life of hydraulic components. Chrome-plated piston rods are corrosion resistant, and cylinder walls are honed.



Built In Safety Chock

Prevents accidental lowering of table during maintenance.



Comfort Edge Design

No sharp corners on table top. Bright safety yellow stripe for high visibility.



Heavy-Duty Torque Tubes

Torque tubes minimize platform twisting and deflection for high degree of rigidity and stability.



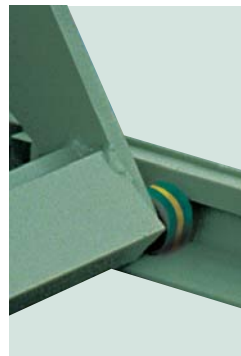
Tell-Tale Return Hydraulic Fluid Line

Clear plastic return line from cylinder rod bearing to tank gives visual indication of need to repack cylinder and prevents fluid spillage in the event of a bypass.



Adjustable Flow Control

Pressure compensated flow control valve with lock out. Preset and locked at 10 F.P.M. maximum lowering speed per ANSI Standard, MH29 where applicable.



Wear Indicating Rollers and Roll Retainers

Rollers are captured in the base by means of retainers to prevent accidental separation or misalignment. All oversized width tabletops also include an upper set of retainers.

Southworth Scissors Lifts are designed and manufactured to meet or exceed ANSI MH29.1 Safety Requirements for Industrial Scissors Lifts.

	Model No.	Capacity (Lbs.)	Vertical Travel (Inches)	Height Min. Max. (Inches)		Standard Platform (Inches)	Maximum Platform (Inches)	Elevating Time (Seconds)	HP	Standard Voltage	Approx. Shipping Weight/Lbs. (std. platform)
	LL & LS Series Backsaver Lite Lifts										
QUICK SHIP MODELS	LL05.5-26	550	26	5 ½	31½	20 x 36	36 x 60	9	½	115/1/60	240
	LL1.1-26	1100	26	5 ½	31½	20 x 36	36 x 60	21	½	115/1/60	255
	LL1.5-35	1500	35	6 ¼	41 ¼	24 x 48	36 x 60	32	½	115/1/60	450
	CLL05.5-26	550	26	10 ½	36½	24 x 40	30 x 48	7	½	12 volt DC	315
	CLL1.1-26	1100	26	10 ½	36½	24 x 40	30 x 48	13	½	12 volt DC	325
	LS05-30	500	30	6	36	12 x 24	12 x 24	20	½	115/1/60	175
	LS05-30W	500	30	6	36	16 x 24	24 x 36	20	½	115/1/60	200
	LS1-30	1000	30	6	36	16 x 24	24 x 36	20	½	115/1/60	225
	LS Series Backsaver Lifts										
	LS2-24	2000	24	6%	30%	24 x 36	48 x 60	14	1	115/1/60	500
LS4-24	4000	24	6%	30%	24 x 36	48 x 60	28	1	115/1/60	550	
LS6-24	6000	24	7%	31%	24 x 36	48 x 60	44	1	115/1/60	600	
LS2-36	2000	36	6%	42%	24 x 48	48 x 72	21	1	115/1/60	600	
LS4-36	4000	36	6%	42%	24 x 48	48 x 72	42	1	115/1/60	650	
LS6-36	6000	36	7¼	43¼	24 x 48	48 x 72	22	3.2	460/3/60	725	
LS2-48	2000	48	8	56	24 x 66	48 x 96	9	3.2	460/3/60	950	
LS4-48	4000	48	8	56	24 x 66	48 x 96	18	3.2	460/3/60	1000	
LS6-48	6000	48	8	56	24 x 66	48 x 96	27	3.2	460/3/60	1050	
LS2-24W	2000	24	6%	30%	36 x 36	60 x 60	14	1	115/1/60	575	
LS4-24W	4000	24	6%	30%	36 x 36	60 x 60	28	1	115/1/60	625	
LS6-24W	6000	24	7%	31%	36 x 36	60 x 60	44	1	115/1/60	675	
LS2-36W	2000	36	6%	42%	36 x 48	60 x 72	21	1	115/1/60	700	
LS4-36W	4000	36	6%	42%	36 x 48	60 x 72	42	1	115/1/60	750	
LS6-36W	6000	36	7¼	43¼	36 x 48	60 x 72	22	3.2	460/3/60	825	
LS2-48W	2000	48	8	56	48 x 66	72 x 96	9	3.2	460/3/60	1150	
LS4-48W	4000	48	8	56	48 x 66	72 x 96	18	3.2	460/3/60	1200	
LS6-48W	6000	48	8	56	48 x 66	72 x 96	27	3.2	460/3/60	1250	
LS Series Plus Lifts											
LS8-36	8000	36	9	45	30 x 60	54 x 84	21	3.2	460/3/60	1350	
LS10-36	10000	36	10	46	30 x 60	54 x 84	28	3.2	460/3/60	1400	
LS12-36	12000	36	10	46	30 x 60	54 x 84	28	3.2	460/3/60	1500	
LS3-42	3000	42	6%	48%	24 x 56	48 x 84	49	1	460/3/60	725	
LS5-42	5000	42	7	49	24 x 56	48 x 84	74	1	460/3/60	775	
LS8-48	8000	48	9	57	24 x 66	48 x 96	30	3.2	460/3/60	1350	
LS2-60	2000	60	10	70	24 x 86	48 x 120	10	3.2	460/3/60	1300	
LS4-60	4000	60	10	70	24 x 86	48 x 120	20	3.2	460/3/60	1375	
LS5-60	5000	60	8	68	24 x 86	48 x 120	29	3.2	460/3/60	1450	
LS6-60	6000	60	10	70	24 x 86	48 x 120	30	3.2	460/3/60	1450	
LS8-60	8000	60	10	70	24 x 86	48 x 120	42	3.2	460/3/60	1700	
LS2-72	2000	72	10	82	30 x 102	60 x 132	19	3.2	460/3/60	2000	
LS4-72	4000	72	10	82	30 x 102	60 x 132	38	3.2	460/3/60	2100	
LS6-72	6000	72	12	84	30 x 102	60 x 132	41	3.2	460/3/60	2200	
LS2-84	2000	84	10	94	30 x 120	60 x 156	26	3.2	460/3/60	2200	
LS4-84	4000	84	10	94	30 x 120	60 x 156	52	3.2	460/3/60	2300	
LS6-84	6000	84	14	98	30 x 120	60 x 156	56	3.2	460/3/60	2500	
LS Series Wide Base Lifts											
LS8-36W	8000	36	9	45	42 x 60	66 x 84	21	3.2	460/3/60	1500	
LS10-36W	10000	36	10	46	42 x 60	66 x 84	28	3.2	460/3/60	1600	
LS12-36W	12000	36	10	46	42 x 60	66 x 84	28	3.2	460/3/60	1700	
LS3-42W	3000	42	6%	48%	42 x 56	66 x 84	49	1	460/3/60	875	
LS5-42W	5000	42	7	49	42 x 56	66 x 84	74	1	460/3/60	925	
LS8-48W	8000	48	9	57	48 x 66	72 x 96	30	3.2	460/3/60	1550	
LS2-60W	2000	60	10	70	54 x 86	84 x 120	20	3.2	460/3/60	1650	
LS4-60W	4000	60	10	70	54 x 86	84 x 120	20	3.2	460/3/60	1725	
LS5-60W	5000	60	8	68	54 x 86	84 x 120	29	3.2	460/3/60	1800	
LS6-60W	6000	60	10	70	54 x 86	84 x 120	30	3.2	460/3/60	1800	
LS8-60W	8000	60	10	70	54 x 86	84 x 120	42	3.2	460/3/60	2150	
LS2-72W	2000	72	10	82	60 x 102	96 x 132	24	3.2	460/3/60	2450	
LS4-72W	4000	72	10	82	60 x 102	96 x 132	38	3.2	460/3/60	2550	
LS6-72W	6000	72	12	84	60 x 102	96 x 132	41	3.2	460/3/60	2700	
LS2-84W	2000	84	10	94	60 x 120	96 x 156	35	3.2	460/3/60	2750	
LS4-84W	4000	84	10	94	60 x 120	96 x 156	52	3.2	460/3/60	2850	
LS6-84W	6000	84	14	98	60 x 120	96 x 156	56	3.2	460/3/60	3100	

Lifts with 3.2 HP three-phase power units available with 1 HP single-phase power units. Rise time increases by a multiplier of 3.3.

Heavy-Duty DL Series Lifts, L Series Cam Lifts and Tandem Lifts (Long and Wide Base)

DL Series Lifts

These heavy-duty lifts are ideal for cargo handling and lifting heavy industrial loads. Built-in hydraulic overload relief protects personnel and structures. Heavy-plate platforms with structural reinforcement minimize deflection while the wide base provides increased rigidity and stability.

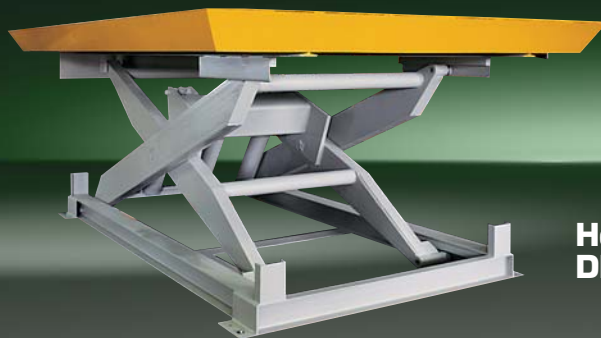
L Series Cam Lifts

Exclusive CAM design provides maximum capacities (up to 30,000 lbs.) with minimum height clearances.

Tandem Lifts

LST Tandem lifts provide level rise for long loads such as lumber, pipes, sheets, bar stock, and assemblies. These lifts are typically used as feeding tables for tube welders, formers, and panel saws as well as for bundling and banding bar stock, lumber, and other materials.

Tandem design allows the combination of high capacity and low collapsed height to support loads up to 7' x 17'. They are available in extra long and extra wide configurations.



**Heavy-Duty
DL Series Lifts**



L Series Cam Lifts



Tandem Lifts

DL Series Heavy-Duty Lifts

Model No.	Capacity (Lbs.)	Vertical Travel (Inches)	Height Min. (Inches)	Height Max. (Inches)	Standard Platform (Inches)	Maximum Platform (Inches*)	Top Plate Thickness	Elevating Time (Seconds)	HP	Standard Voltage	Approx. Shipping Weight/Lbs. (std. platform)
DL20-36	20000	36	16	52	60 x 76	96 x 108	½	56	3.2	460/3/60	4000
DL10-48	10000	48	13¼	61¼	47 x 76	84 x 108	¾	56	3.2	460/3/60	3300
DL15-48	15000	48	14¼	62¼	60 x 76	96 x 108	½	62	3.2	460/3/60	4000
DL25-48	25000	48	16	64	60 x 76	96 x 108	½	85	3.2	460/3/60	4800
DL10-60	10000	60	16	76	60 x 102	96 x 144	¾	48	3.2	460/3/60	4800
DL12-60	12000	60	16	76	60 x 102	96 x 144	¾	52	3.2	460/3/60	5100
DL16-60	16000	60	16	76	60 x 102	96 x 144	½	72	3.2	460/3/60	5300
DL20-60	20000	60	22	82	60 x 120	96 x 144	½	86	3.2	460/3/60	6800
DL25-60	25000	60	26	86	72 x 144	108 x 180	½	105	3.2	460/3/60	10500
DL20-72	20000	72	22	94	72 x 144	108 x 180	½	112	3.2	460/3/60	9700
DL4-84	4000	84	12	96	60 x 120	96 x 156	¾	45	3.2	460/3/60	4200
DL6-84	6000	84	16	100	60 x 120	96 x 156	¾	48	3.2	460/3/60	5000
DL10-84	10000	84	16	100	60 x 120	96 x 156	¾	88	3.2	460/3/60	5800

*Maximum platforms are for reasonably uniform loads.

L Series CAM Lifts

Model No.	Capacity (Lbs.)	Vertical Travel (Inches)	Height Min. (Inches)	Height Max. (Inches)	Standard Platform (Inches)	Maximum Platform (Inches)	Frame Size (Inches)	Elevating Time (Seconds)	HP	Standard Voltage	Approx. Shipping Weight/Lbs. (std. platform)
L8-36	8000	36	7%	43%	30 x 60	48 x 78	28½ x 60	21	3.2	460/3/60	1360
L10-36	10000	36	9	45	32 x 60	54 x 78	30¾ x 60	31	3.2	460/3/60	1800
L15-36	15000	36	9½	45½	36 x 72	60 x 90	34½ x 70½	50	3.2	460/3/60	2900
L20-36	20000	36	10%	46%	36 x 72	60 x 90	34½ x 70½	50	3.2	460/3/60	3300
L30-36	30000	36	11¼	47¼	43 x 72	72 x 96	41 x 70½	56	5.0	460/3/60	4400

LST Series Tandem Lifts

Model No.	Capacity (Lbs.)	Vertical Travel (Inches)	Height Min. (Inches)	Height Max. (Inches)	Standard Platform (Inches)	Maximum Platform (Inches)	Elevating Time (Seconds)	HP	Standard Voltage	Approx. Shipping Weight/Lbs. (std. platform)
LST 4-36	4000	36	6%	42%	24 x 96	48 x 120	42	1	115/1/60	1150
LST 8-36	8000	36	6%	42%	24 x 96	48 x 120	84	1	115/1/60	1250
LST 12-36	12000	36	7¼	43¼	24 x 96	48 x 120	44	3.2	460/3/60	1400
LST 4-48	4000	48	8	56	24 x 132	48 x 168	18	3.2	460/3/60	1850
LST 8-48	8000	48	8	56	24 x 132	48 x 168	36	3.2	460/3/60	1950
LST 12-48	12000	48	8	56	24 x 132	48 x 168	54	3.2	460/3/60	2050
LST 4-60	4000	60	10	70	24 x 172	48 x 204	20	3.2	460/3/60	2550
LST 8-60	8000	60	10	70	24 x 172	48 x 204	40	3.2	460/3/60	2700
LST 10-60	10000	60	8	68	24 x 172	48 x 204	58	3.2	460/3/60	2850
LST 12-60	12000	60	10	70	24 x 172	48 x 204	60	3.2	460/3/60	2850

LST Series Wide Base Lifts

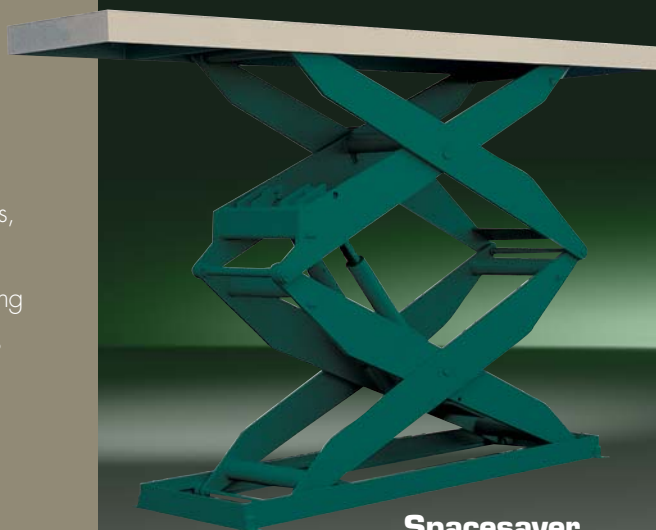
Model No.	Capacity (Lbs.)	Vertical Travel (Inches)	Height Min. (Inches)	Height Max. (Inches)	Standard Platform (Inches)	Maximum Platform (Inches)	Elevating Time (Seconds)	HP	Standard Voltage	Approx. Shipping Weight/Lbs. (std. platform)
LST 4-36W	4000	36	6%	42%	36 x 96	60 x 120	42	1.0	115/1/60	1350
LST 8-36W	8000	36	6%	42%	36 x 96	60 x 120	84	1.0	115/1/60	1450
LST 12-36W	12000	36	7¼	43¼	36 x 96	60 x 120	44	3.2	460/3/60	1600
LST 4-48W	4000	48	8	56	48 x 132	72 x 168	18	3.2	460/3/60	2250
LST 8-48W	8000	48	8	56	48 x 132	72 x 168	36	3.2	460/3/60	2350
LST 12-48W	12000	48	8	56	48 x 132	72 x 168	54	3.2	460/3/60	2450
LST 4-60W	4000	60	10	70	54 x 172	84 x 204	40	3.2	460/3/60	3250
LST 8-60W	8000	60	10	70	54 x 172	84 x 204	40	3.2	460/3/60	3400
LST 10-60W	10000	60	8	68	54 x 172	84 x 204	58	3.2	460/3/60	3550
LST 12-60W	12000	60	10	70	54 x 172	84 x 204	60	3.2	460/3/60	3550

Lifts with 3.2 HP three-phase power units available with 1 HP single-phase power units. Rise time increases by a multiplier of 3.3. The listings above represent Southworth's most popular tandem lift arrangements, however, practically any lift models can be tandemized end to end or side by side - Consult Factory.

Spacesaver® High Rise Lifts and Specialty Lift Tables

Spacesaver® Lifts

LSH Spacesaver® lifts can be used as personnel work platforms, as cargo lifts, between levels as mezzanine lifts, and for positioning test apparatus or tools. These lifts are available with vertical travel up to 12 feet. Capacities range from 1,000 to 12,000 pounds.



Spacesaver Lifts

Floor Height Lifts

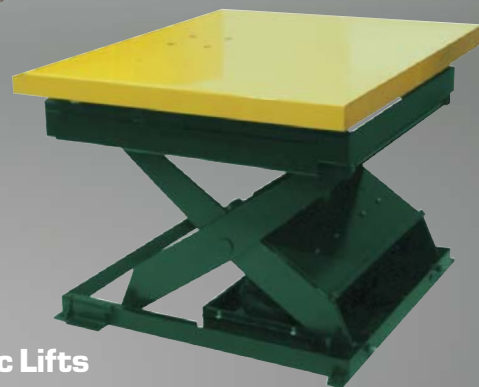
These lift tables lower to floor height or near floor height so that they can be fed and offloaded by hand pallet trucks. Standard capacities range from 500 to 6,000 pounds.



Floor Height Lifts

Pneumatic Lifts

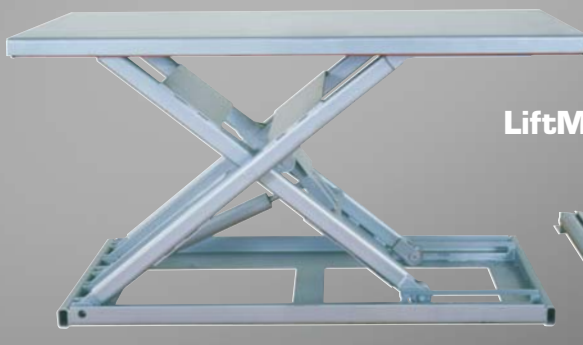
For use anywhere that shop air is available. Capacities up to 4,000 pounds. No hydraulic fluid means no risk of contaminants in the production process.



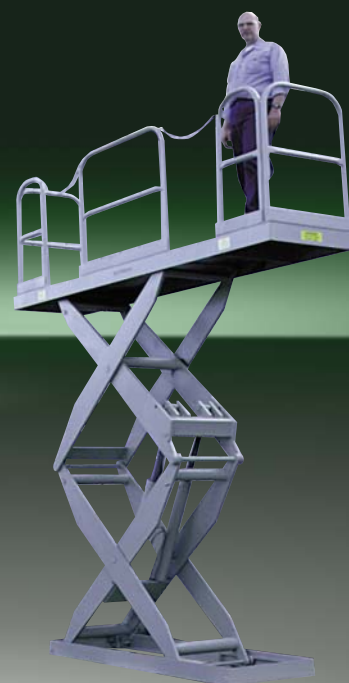
Pneumatic Lifts

Lifts for Palletizing

Southworth manufactures a wide variety of Lift Tables for use in palletizing applications. See our Pallet Handling Brochure for a complete selection.



LiftMat Series



Personnel Lifts

LSH Series Spacesaver High Rise Lifts

Model No.	Capacity (Lbs.)	Vertical Travel (Inches)	Height Min. (Inches)	Height Max. (Inches)	Standard Platform (Inches)	Maximum Platform (Inches)	Elevating Time (Seconds)	HP	Standard Voltage	Approx. Shipping Weight/Lbs. (std. platform)
LSH 1-36	1500	36	10	46	24 x 32	36 x 48	16	1.0	115/1/60	600
LSH 1-48	1000	48	9½	57½	24 x 40	36 x 54	21	1.0	115/1/60	750
LSH 2-48	2000	48	9½	57½	24 x 40	36 x 54	42	1.0	115/1/60	800
LSH 4-48	4000	48	12	60	30 x 42	48 x 60	16	3.2	460/3/60	1250
LSH 6-48	6000	48	14	62	32 x 42**	48 x 60	35	3.2	460/3/60	1300
LSH 1-60	1000	60	10½	70½	24 x 48	36 x 60	27	1½	115/1/60	750
LSH 2-64	2500	64	12½	76½	24 x 53	42 x 66	16	3.2	460/3/60	1100
LSH 5-60	5000	60	14	74	30 x 53	48 x 66	30	3.2	460/3/60	1800
LSH 8-60	8000	60	14	74	30 x 54	48 x 66	43	3.2	460/3/60	1900
LSH 12-60	12000	60	18	78	36 x 67	60 x 84	95	3.2	460/3/60	3200
LSH 1-72	1500	72	12½	84½	20 x 53	36 x 66	58	1½	115/1/60	900
LSH 2-72	2000	72	12½	84½	20 x 53	36 x 66	75	1½	115/1/60	950
LSH 5-72	5000	72	14	86	32 x 57**	54 x 72	36	3.2	460/3/60	2000
LSH 2-84	2000	84	17	101	33 x 69	60 x 90	29	3.2	460/3/60	1900
LSH 4-84	4000	84	17	101	33 x 69	60 x 90	34	3.2	460/3/60	2200
LSH 6-84	6000	84	17	101	33 x 69	60 x 90	62	3.2	460/3/60	2350
LSH 1-96†*	1000	96	17½	113½	24 x 53	42 x 66	17	3.2	460/3/60	1600
LSH 3-96	3000	96	17	113	36 x 77	60 x 108	50	3.2	460/3/60	3000
LSH 5-96	5000	96	17	113	36 x 77	60 x 108	64	3.2	460/3/60	3500
LSH 10-96	10000	96	20	116	36 x 77	60 x 108	102	3.2	460/3/60	4500
LSH 2-114	2000	114	17	131	33 x 88	60 x 108	36	3.2	460/3/60	3400
LSH 5-120*	5000	120	24	144	44 x 69***	72 x 96	102	3.2	460/3/60	4800
LSH 3-128	3000	128	21	149	42 x 96	72 x 120	48	3.2	460/3/60	3400
LSH 6-128	6000	128	21	149	42 x 96	72 x 120	80	3.2	460/3/60	3500
LSH 2-144*	2000	144	24	168	42 x 77	72 x 108	68	3.2	460/3/60	4350
LSH 4-144*	4000	144	24	168	42 x 77	72 x 108	136	3.2	460/3/60	4500
LSH 5-144	5000	144	21	165	42 x 108	72 x 144	125	3.2	460/3/60	4000

† 1½" Lateral motion

*Three sets of legs—All others have two

** Base frame width 30

***Base frame width 42

ZLS Series Floor Height Lift Tables

Model No.	Capacity (Lbs.)	Vertical Travel (Inches)	Overall Width	Inside Width	Platform Length	Side Height	Deck Thickness	Standard Platform (Inches)	Elevating Time (Seconds)	HP	Standard Voltage	Approx. Shipping Weight/Lbs. (std. platform)
ZLS2-35	2000	35"	49 - 67¼"	32-50"	48"	7¾"	¾"	50 x 48"	45	1	115/1/60	1425
ZLS4-35	4000	35"	49 - 67¼"	32-50"	48"	7¾"	¾"	50 x 48"	48	1	115/1/60	1440
ZLS6-34	6000	34"	53 - 71¼"	32-50"	48"	8¾"	½"	50 x 48"	63	1	115/1/60	1865

LiftMat Series

Model No.	Capacity (Lbs.)	Vertical Travel (Inches)	Low Height (Inches)	Raised Height (Inches)	Standard Platform (Inches)	Maximum Platform (Inches)	Elevating Time (Seconds)	HP	Standard Voltage	Approx. Shipping Weight/Lbs. (std. platform)
LM-05	500	32"	3"	35"	24 x 66"	48 x 96"	15	1	115/1/60	540
LM1	1000	32"	3"	35"	24 x 66"	48 x 96"	15	1	115/1/60	560
LM2	2000	31½"	3½"	35"	24 x 96"	48 x 96"	20	1	115/1/60	600

Pneumatic Lifts

Model No.	Capacity (Lbs.)	Vertical Travel (Inches)	Low Height (Inches)	Raised Height (Inches)	Standard Platform (Inches)	Maximum Platform (Inches)	Elevating Time (Seconds)	Air (PSI) Free Air	Approx. Shipping Weight/Lbs. (std. platform)
LSA2-24	2000	24	7 ½"	31 ½"	26" x 48"	48" x 72"	15 (empty)	80 psi/15 cfm	650
LSA4-24	4000	24	8"	31 ½"	42" x 48"	66" x 72"	15 (empty)	80 psi/15 cfm	800

Hydraulic / Actuation Options



Larger Power Units*
Higher horsepower motors and hydraulics used to increase travel speed.



Air Motor Driven Power Units
For use where electrical actuation is undesirable and shop air is available; meets explosion proof requirements.



DC Power Units
Direct current power units for use with battery power.



External Power Unit*
Power unit is connected to lift only by hydraulic hoses.



Manual Hand or Foot Pump Actuation
Lever type hand pump or foot pedal pump for use when manual actuation or precise positioning is required.



Cross Check Valving*
Locks oil in cylinders to eliminate deflection caused by oil transfer. Used in certain side loading applications.



Power Units Full JIC Style Continuous Running Power Units*
Continuous running power unit built to JIC specifications.



No Coast Valving*
Fast acting hydraulic valving, which decreases upward coast, for use where more precise positioning is desired.



Minimum Downdrift Valving*
Near positive shut-off valving for use where platform must maintain position for extended periods of time.



Continuous Running Power Units*
Heavy-duty power units with special cooling features. Power unit runs continuously, and valves are actuated to activate lift. Used for extremely high jogs or cycles.



Double Acting Cylinders*
For special applications where it is necessary to provide both power up and power down.



Air Bag Actuation
Inflatable air bag provides limited travel lift actuation. Used where electrical power is not desirable or where only two positions are required.



Continuous Duty Power Units*
Specially designed power units with motors capable of many motor starts per hour.



Screw Jack*
Lift is actuated by gear motor driven worm or ball screw. For more precise, repetitive positioning or where hydraulics are not desired.



Hot and Cold Temperature Hydraulic Packaging
Special sealing and hydraulic fluids for use in hot or cold atmospheres.



Velocity Fuse(s)/Excess Flow Protectors
Hydraulic control prevents table free fall in the unlikely event of massive hydraulic failure.

Electronic Control Options



Wall Mounted Push Button
Permanent wall mounted controls for use where a fixed operating station is desirable.



Maintained Contact Controls
Up/down/emergency stop push button control which stops travel automatically at preset level. (Control button does not have to be held.)



Automatic Leveling Package
Optical sensing control positions table and stops travel at any preset height.



Electrical Quick Disconnect
Quick disconnect plugs for use with portable or frequently relocated lifts.



Special NEMA Rated Electrical Packages*
A variety of electrical packages designed to meet NEMA standards for outdoor, explosion proof, and other installation requirements.



Visual or Audible Signals
Lights or bells used to warn personnel when lift is in operation.



Travel Limit Switch(es)
Electrical switch stops travel, prevents overtravel, provides height positioning, and can activate associated equipment. Should be used with mechanical stop for fixed lowered height.



One-Touch Auto Leveling
Increase productivity in repositioning applications. Raise or lower lifts a specific increment at the touch of a button.

Mechanical Options



Narrow Base
Reduced width base to fit special needs. Must be lagged for stability.



Lifting Eyes
Steel eye bolts allow table to be lifted with hoist. Frequently used in pit mounted applications for ease of installation and maintenance.



Wide Base
Increased width base provides extra stability for wider loads.



Lag Plates
Permanently attached plates or angles with bolt holes for lagging tables to floor.



Sub Bases
Extra base unit increases low height of standard designs. Provides a positive stop at predetermined down level. Frequently used for integration with automated systems.



Increased Roll Over Capacity
Structural strengthening of table support for use in pit installations where loaded trucks or transporters must traverse the platform in its lowered position.

Portability and Transport Options



Semi-Live Portable
Consists of wheels at one end of base and pull plate at the other, plus wheeled jack handle. Used only for moving table to a new position, and not for transporting materials.



Powered Traverse
Hydraulic motor drives two wheels on a single shaft via a chain and sprocket.



Vee Groove Wheels
Steel wheels with groove for use with inverted angle or Vee track to provide unidirectional horizontal movement.



Flanged Wheels
Steel wheels with flange for use with flat or rail track to provide unidirectional horizontal movement.



Casters
A variety of casters, mounting arrangements, and floor locks is available for use where full portability and maneuverability are desired.



Push Bar
Hand height bar to facilitate manual movement of wheeled or castered portable units.

Platform Options



Manual or Powered Turntables
Bearing mounted and supported turntables for rotating or positioning loads of work.



Vee Cradle Platform
Vee shaped platform provides centering and secure handling of cylindrical loads, such as rolls.



Tilting Tops
30°, 45°, and 90° tilting platforms for better positioning of certain loads.



Fork Pockets
Structural fork pockets allow entire unit to be lifted and moved by fork truck.



End-Shifting Platform
Manual or powered platform end-shift used to align loads with other handling systems or operating equipment.



Ball Transfer Top
Fixed or retractable ball conveyors for omnidirectional movement of load on platform.



Gravity or Powered Conveyor Tops
Roller conveyor tops for integration with other handling equipment or systems.



Access Plate
Removable or hinged plate in platform surface allows access to power unit and hydraulics when lift is in lowered position.



Stainless Steel Platform
Corrosion and damage resistant surface for use with corrosive materials or where frequent wash down is required.



Fixed and Removable Handrails with Snap Chain
For use in applications involving personnel lifting. Removable rails allow access from any side when lift is not in use.



Throw-Over Plates
Hinged plates used to provide a bridge between the platform surface and an adjacent fixed height surface.



Anti-skid Platform Surfaces
Diamond tread platform surface or abrasive type paint provide better traction for powered vehicles and reduce danger of personnel slipping.



Wheel Chock
Counter-weighted wheel chock recessed in table top. Automatically engages as lift raises and prevents wheeled vehicle from rolling in set direction.



Bevel Toe Guard
30° bevel on platform sides provides warning contact without abrupt shear point when lift table is installed in pit.



Bellows Accordion Skirting
Single-ply stitched polyester skirting covers mechanism between platform and base. Also available as boots to cover cylinders only. (See photo on page 10)



Toe Sensing Edge
Automatically reverses lift on contact with any obstruction.

Environmental Options



Export Boxing
Meets special packaging and shipping requirements for export out of the United States.



Special Paint
Customer specified paint formulations and colors. Corrosion Protection similar to that of Hot Dip Galvanizing.



Cam Follower Rollers*
Low friction leg rollers for increased efficiency and longer operating life.



High Duty Cycle and Greased Manifolds*
Special bearing packages and regreaseable pivot points for moderately high and high duty cycle applications.

* Because of the high performance of standard tables, most asterisked options may not be required in normal usage. To avoid unnecessary cost, please consult factory before specifying these options.



BACKSAVER LIFTS – AVAILABLE IN OVER ONE MILLION VARIATIONS

Extremely rugged and reliable Southworth Backsaver Lifts are used in thousands of locations everyday involving, machine feeding, work positioning, assembly, order picking, pallet loading, and many other applications.



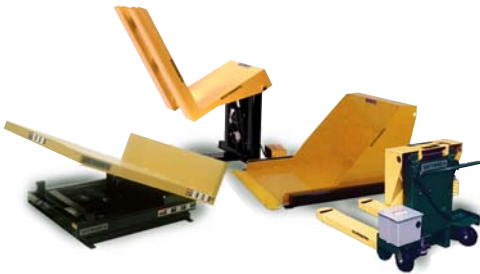
LIFTER/TRANSPORTERS

These inexpensive lifter/transporters make just about any job easier. They are essential wherever lifting, positioning, assembling, stacking, unstacking, transporting or the need for an adjustable height work surface is part of the job. Available in several models including: low profile for use with skids, containers or plastic pallets; selfleveling units and battery powered mechanical lifts.



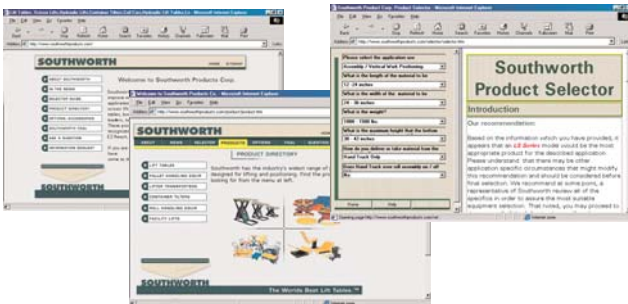
PALLETPAL® PALLET LEVEL LOADERS

These simple devices have revolutionized manual pallet loading and unloading by making the process faster, easier and safer. Products include Mechanical and Pneumatic auto adjusting load levelers, roll-on hydraulic levelers, portable turntables and even stretch wrappers.



E-Z REACH™ CONTAINER TILTERS

Available in a variety of sizes and configurations, these container tilters are designed to improve worker productivity and safety by positioning wire baskets and other large containers so that parts are easily accessible without the need for bending, stretching, reaching, or unnecessary lifting.



ALL THE INFORMATION YOU NEED AT THE CLICK OF A MOUSE

In order to provide customers with the information they need when they need it, Southworth has established the most complete and comprehensive website in the industry. Users can view product specifications or get help picking the right product for their application by using the state-of-the-art application selector guide.

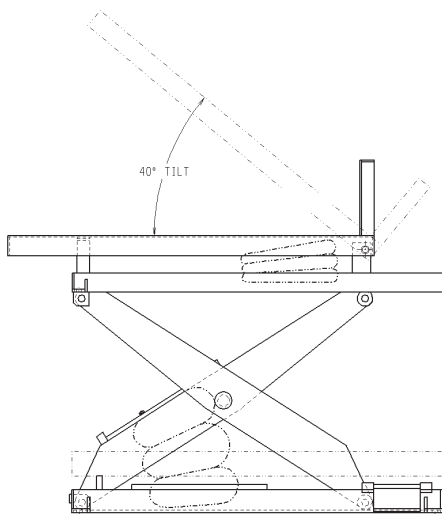
Visit www.SouthworthProducts.com



PNEUMATIC

Lift Tables • Tilters • Lift & Tilts

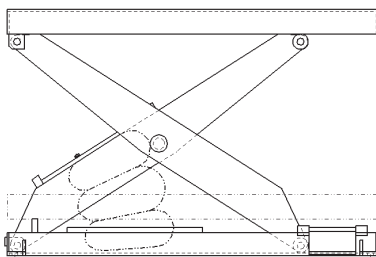
Rugged, powerful lift, tilt or lift and tilt tables for use at any workstation where shop air is available. Southworth pneumatics can handle loads up to 4,000 lbs. with as little as 80 psi. They require less maintenance than conventional lifts and tilters, and because they do not use hydraulics there is no risk of any contaminants in the production process.



SPECIFICATIONS AND DIMENSIONS

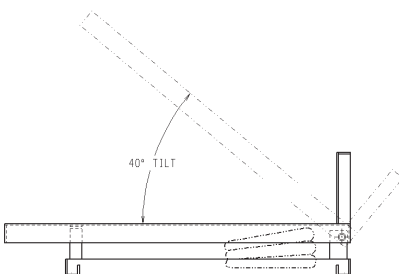
PNEUMATIC LIFT & TILT

Model	Capacity	Standard Platform	Max Platform	Lowered Height	Travel Vertical	Travel Angular	Raised Height	Power Requirement
LTA2-24	2000 lbs.	30" x 48"	48" x 72"	14¼"	24"	40°	38¼"	80 psi
LTA4-24	4000 lbs.	46" x 48"	66" x 56"	14¼"	24"	40°	38¼"	80 psi



PNEUMATIC LIFT

Model	Capacity	Standard Platform	Max Platform	Lowered Height	Travel	Raised Height	Power Requirement
LSA2-24	2000 lbs.	26" x 48"	48" x 72"	7½"	24"	31½"	80 psi
LSA4-24	4000 lbs.	42" x 48"	66" x 72"	8"	24"	32"	80 psi



PNEUMATIC TILTER

Model	Capacity	Standard Platform	Max Platform	Lowered Height	Travel (angular)	Power Requirement
TA2-40	2000 lbs.	24" x 48"	56" x 72"	9"	40°	80 psi
TA4-40	4000 lbs.	42" x 48"	66" x 56"	9"	40°	80 psi

NOTE: Standard base widths may change to accommodate some oversize platforms.

CONTAINER TILTERS

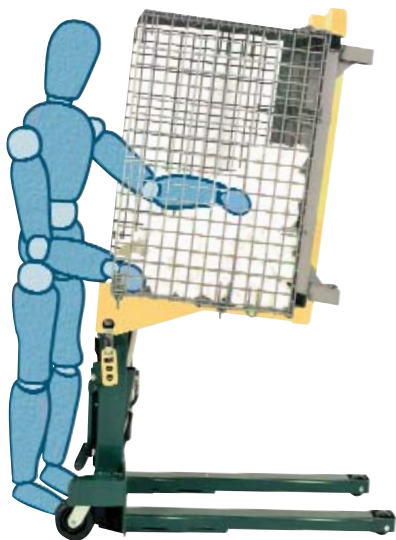
for Every Application



- Improve worker productivity and safety
- Eliminate bending, stretching, & reaching

SOUTHWORTH
We'll Show You How

HANDLE PARTS IN CONTAINERS OR TOTES WITHOUT BENDING, LIFTING OR REACHING



Accessing parts and containers is one of the most significant productivity thieves in any manufacturing or assembly operation. Southworth Container Tilters improve productivity and safety by positioning baskets so that parts are easily accessible without bending, stretching, or reaching.

Southworth offers more models and configurations of container tilters than any other manufacturer. Units are available with capacities up to 4,000 lbs., DC power, hand pallet truck accessibility, and even independent control of lift and tilt. So, no matter what specific machine feeding requirement you have, one of the products shown here can make the job faster, safer, and easier.

In almost every case we've ever seen, production machines work faster than the people feeding them. Getting parts to machines faster not only increases worker productivity, it increases machine productivity, improving R.O.I. and shortening the amount of time it takes for production equipment to "pay for itself", while always improving the safety of the worker.

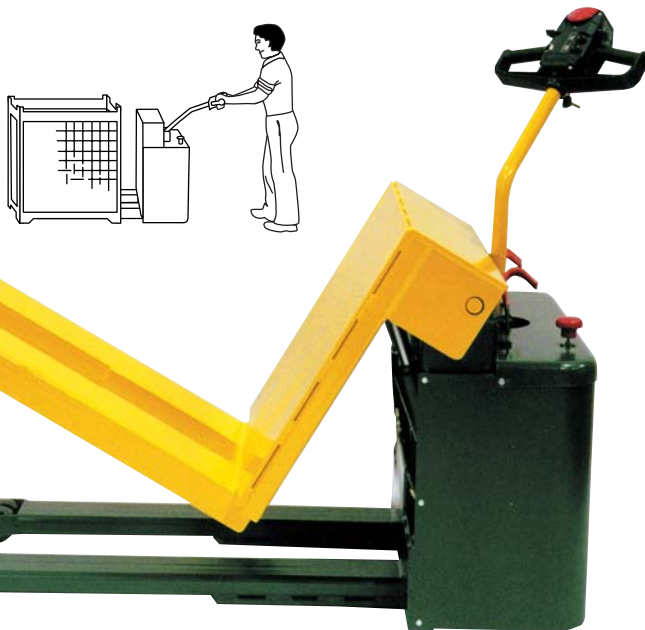
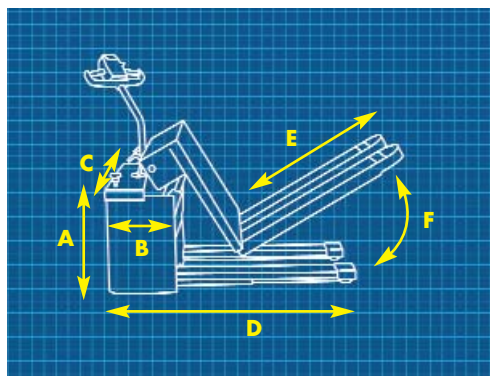
No matter what type of container or tote you are using, Southworth has a tilter that will make the job of machine feeding faster, safer, and easier.



POWERED PORTABLE TILTERS

E-Z REACH E-Z DRIVE

E-Z Reach E-Z Drive™ Tilters combine the best features of "walkies" with our proven E-Z Reach Container Tilter. The powered drive makes it ideal for retrieval and delivery of containers to and from workstations where it can be tilted up to 85° for easy access to parts.



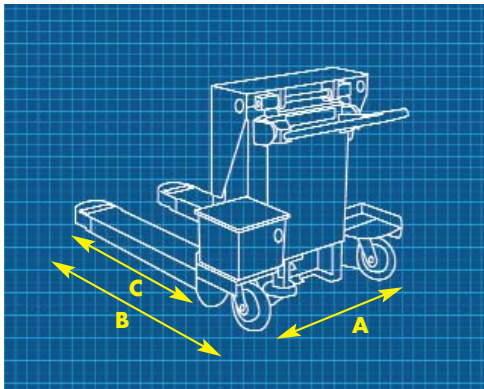
MODEL NO.	CAPACITY	A MAST HEIGHT	B MAST DEPTH	C OVERALL WIDTH	D OVERALL LENGTH	E FORK LENGTH	FORK HEIGHT	FORK OUT TO OUT	FORK WIDTH	F TILT	POWER	APPROX. SHIPPING WEIGHT
MPTU-2	2000 lbs.	31"	18"	36"	58"*	40"	3½"	25½"	8½"	85°	24 Volt DC	1350 lbs.
MPTU-4	4000 lbs.	31"	18"	36"	58"*	40"	3½"	25½"	8½"	85°	24 Volt DC	1400 lbs.

*81" including handle straight out.

PORTABLE FILTERS

E-Z REACH PORTABLE FILTER (Fork Over Style)

Our most popular container filter, the E-Z Reach Portable allows staged containers to be picked up, moved into position, and tilted for easy access. Available with DC power for untethered mobility.

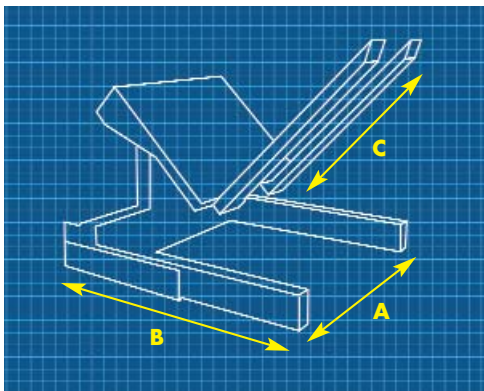


MODEL NO.	CAPACITY	A OVERALL WIDTH	B OVERALL LENGTH	C FORK LENGTH	FORK HEIGHT	TILT	POWER	APPROX. SHIPPING WEIGHT
PTU-2	2000 lbs.	34"	54"	40"	3½"	85°	12 Volt DC	650 lbs.
PTU-4	4000 lbs.	33½"	61½"	41½"	3½"	85°	12 Volt DC	870 lbs.

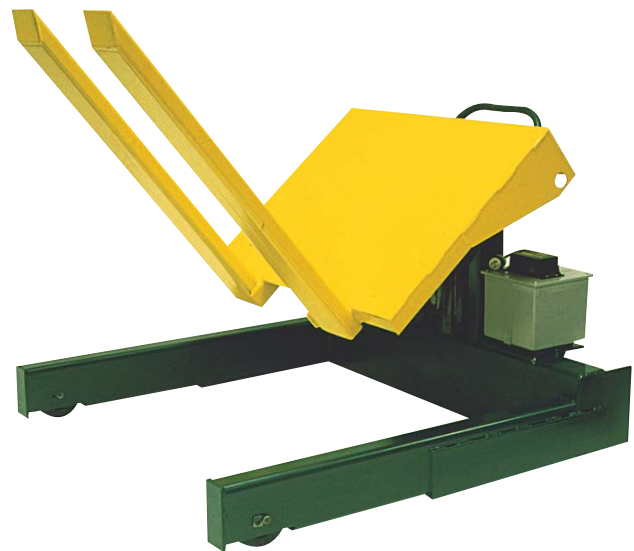
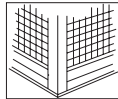
Units are furnished with either push-button or foot switch control.

E-Z REACH PORTABLE FILTER (Straddle Style)

The E-Z Reach Portable Straddle configuration is designed specifically for containers with leg reinforcing bars or closed bottoms.



If your container looks like this choose Straddle



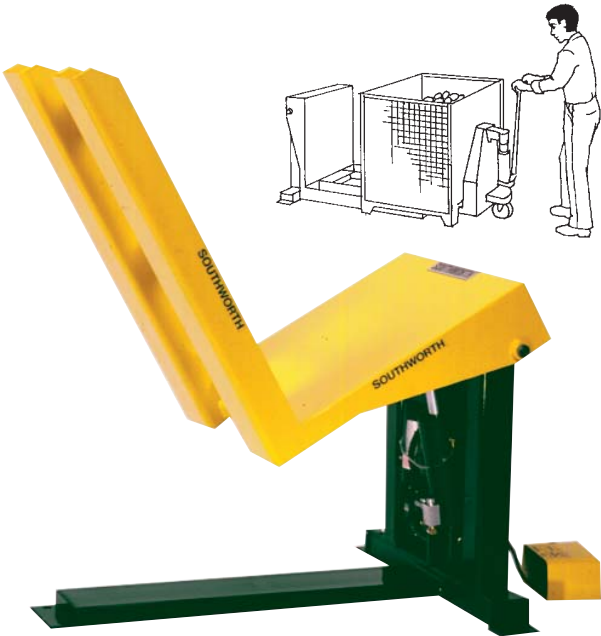
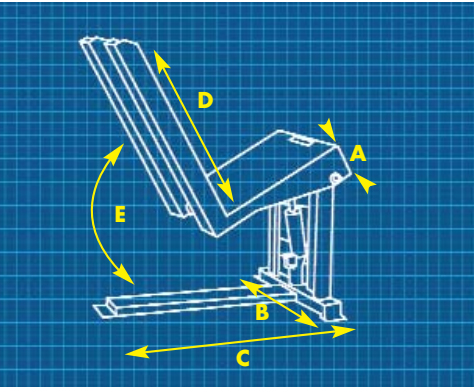
MODEL NO.	CAPACITY	A OVERALL WIDTH	B OVERALL LENGTH	C FORK LENGTH	FORK HEIGHT	TILT	POWER	APPROX. SHIPPING WEIGHT
SPTU-2	2000 lbs.	57"	54"	40"	3½"	85°	12 Volt DC	950 lbs.
SPTU-4	4000 lbs.	57"	58"	40"	3½"	85°	12 Volt DC	1100 lbs.

Units are furnished with either push-button or foot switch control.

HAND PALLET TRUCK ACCESSIBLE TILTERS

E-Z REACH ROLL-ON™ TILTER

With fork channels that allow either hand pallet trucks or fork trucks to place containers directly on the tilter in a single step, the Roll-On E-Z Reach is designed for stationary installation at work stations.

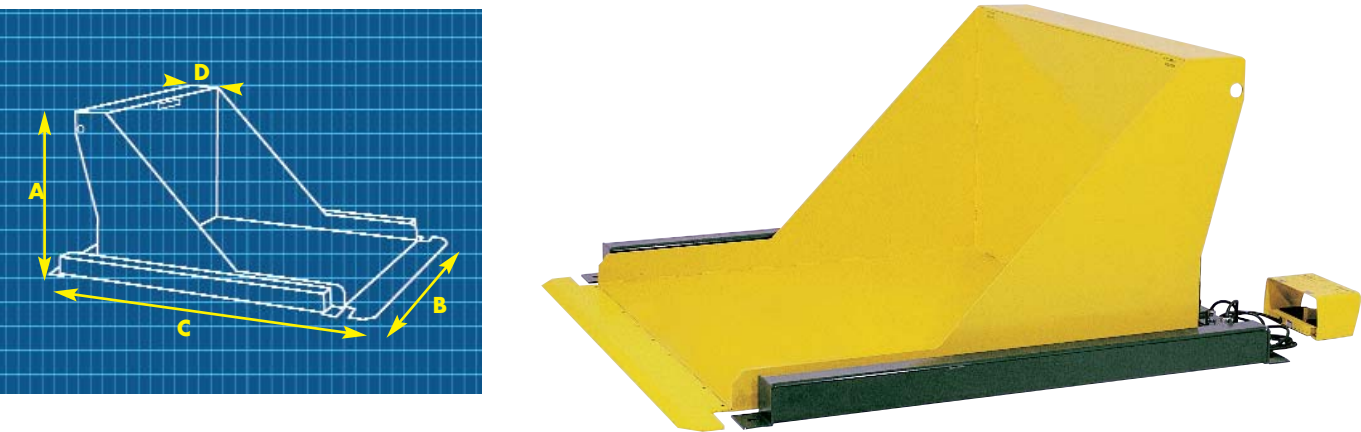
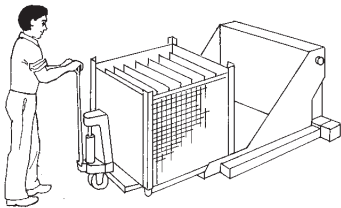
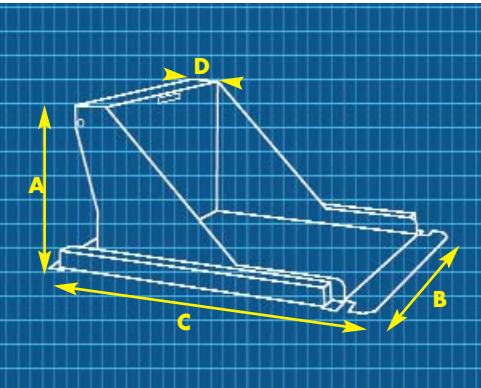


MODEL NO.	CAPACITY	A MAST DEPTH	B OVERALL WIDTH	C OVERALL LENGTH	D FORK LENGTH	FORK OUT TO OUT	FORK WIDTH	E TILT	POWER	APPROX. SHIPPING WEIGHT
ZTU-2	2000 lbs.	7"	42"	47"	40"	29"	8"	85°	115/1/60	650 lbs.
ZTU-4	4000 lbs.	7"	42"	47"	40"	29"	8"	85°	115/1/60	700 lbs.

Units are furnished with either push-button or foot switch control.

E-Z REACH UNIVERSAL TILTER

The wide, unobstructed container pan of the Universal E-Z Reach allows containers of all types, even those with leg reinforcing bars, to be placed directly on the tilter in a single step by either fork trucks or hand pallet trucks. The wide pan even accepts oversized containers.

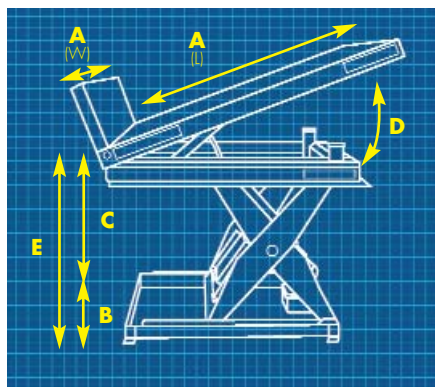


MODEL NO.	CAPACITY	A MAST HEIGHT	B OVERALL WIDTH	C OVERALL LENGTH	D MAST DEPTH	LOW HEIGHT	USABLE PAN SIZE	TILT	STD. POWER	APPROX. SHIPPING WEIGHT
ZTU-2 Pan	2000 lbs.	31½"	62½"	65¼"	7"	3/8"	50" X 50"	85°	115/1/60	1150 lbs.
ZTU-4 Pan	4000 lbs.	31½"	62½"	65¼"	7"	3/8"	50" X 50"	85°	115/1/60	1170 lbs.

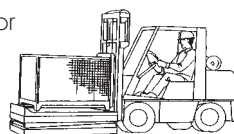
Units are furnished with either push-button or foot switch control.

STATIONARY TILTERS

E-Z REACH LIFT AND TILT – HYDRAULIC OR PNEUMATIC ACTUATION



To precisely position containers with independent control of lift and tilt, E-Z Reach Lift and Tilt is ideal. With its exclusive Universal Tilter Base (UTB) it compensates for the shifting center of gravity as the load is tilted. The open frame top allows the tilting hydraulics to retract within the frame resulting in a lower profile when in the full down position. The UTB also combines a shorter but wider stance for improved stability in a minimum footprint.



Hydraulic

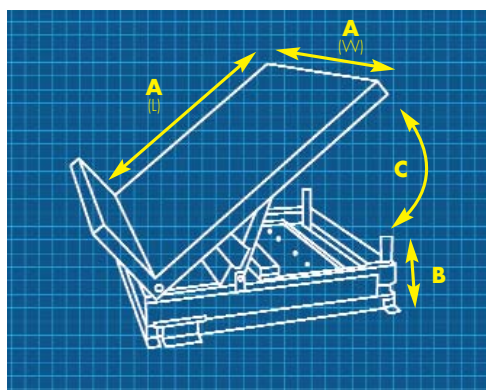
MODEL NO.	CAPACITY	A STANDARD PLATFORM W x L	A MAX PLATFORM W x L	B LOWERED HEIGHT	C TRAVEL VERTICAL	D TRAVEL ANGULAR	E RAISED HEIGHT	POWER REQUIRED	APPROX SHIPPING WEIGHT
UTB1	1000	42" x 42"	66" x 72"	11"	28"	30° or 45°	39"	115/1/60	1100 lbs.
UTB2	2000	42" x 42"	66" x 72"	11"	28"	30° or 45°	39"	115/1/60	1150 lbs.
UTB4	4000	42" x 42"	66" x 54"	11"	28"	30° or 45°	39"	115/1/60	1200 lbs.

Pneumatic

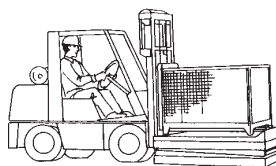
LTA2-24	2000 lbs.	30" x 48"	48" x 72"	14 1/4"	24"	30° or 40°	38 1/4"	80 psi/80 cfm*	900 lbs.
LTA4-24	4000 lbs.	44" x 48"	66" x 56"	14 1/4"	24"	30° or 40°	38 1/4"	80 psi/80 cfm*	1000 lbs.

*Free Air

FIXED HEIGHT TILTER – HYDRAULIC OR PNEUMATIC ACTUATION



For applications utilizing small or shallow containers that do not require vertical repositioning, the Fixed Height Tilter is the ideal choice. Available in 2000 lbs. and 4000 lbs. They can be mounted on the floor or a fixed height table top.



Hydraulic

MODEL NO.	CAPACITY	A STANDARD PLATFORM W x L	A MAX PLATFORM W x L	B LOWERED HEIGHT	C TRAVEL ANGULAR	POWER REQUIRED	APPROX SHIPPING WEIGHT
T2-45	2000 lbs.	24" x 36"	48" x 48"	7 1/2"	30° or 45°	115/1/60	600 lbs.
T4-45	4000 lbs.	24" x 36"	48" x 48"	7 1/2"	30° or 45°	115/1/60	650 lbs.

Pneumatic

TA2-40	2000 lbs.	26" x 48"	48" x 72"	9"	30° or 40°	80 psi/80 cfm*	650 lbs.
TA4-40	4000 lbs.	42" x 48"	66" x 56"	9"	30° or 40°	80 psi/80 cfm*	750 lbs.

*Free Air

BACKSAVER LITE LIFTS



The world's leader in the design and manufacture of hydraulic lift tables introduces a new line of lift tables specifically designed to...

Improve productivity and increase worker safety in applications involving lighter loads.



SOUTHWORTH
making work faster, safer, and easier

BACKSAVER LITE LIFTS

Southworth Backsaver Lite Lifts are available in three basic configurations: Stationary, Portable with DC power and Compacts with extended vertical travel in a small footprint. Capacities are from 500 to 1,500 lbs. with vertical travel up to 35" depending on model. These rugged, dependable, low capacity lifts are packed with features, including:

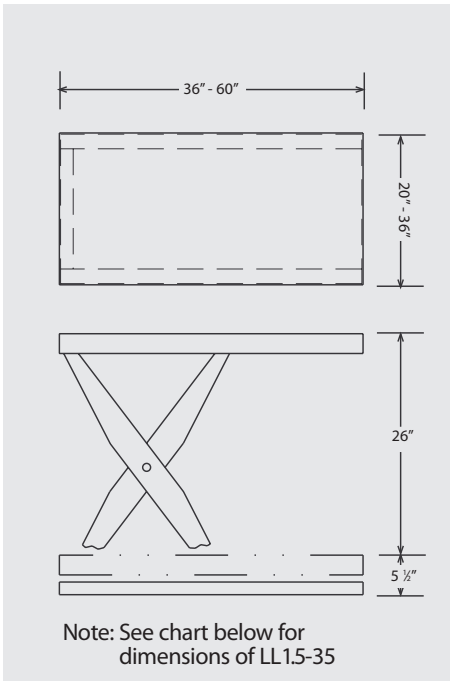
- Low pressure hydraulics
- Fast raising and lowering
- Fully adjustable down speed
- Heavy-duty torque tubes minimize deflection
- Lubricated for life pins, rollers and bushings
- Full width straight through axles for increased stability throughout the travel range
- Heavy-duty hoses for maximum burst strength
- Tell-tale return hydraulic line prevents fluid spillage
- Built-in safety chocks
- Bolt-on power unit is neat, clean and allows for easy access to all components



BACKSAVER LITE



Backsaver Lites are available in 550, 1100 and 1500 pound capacities with a variety of table top sizes to 36" x 60".

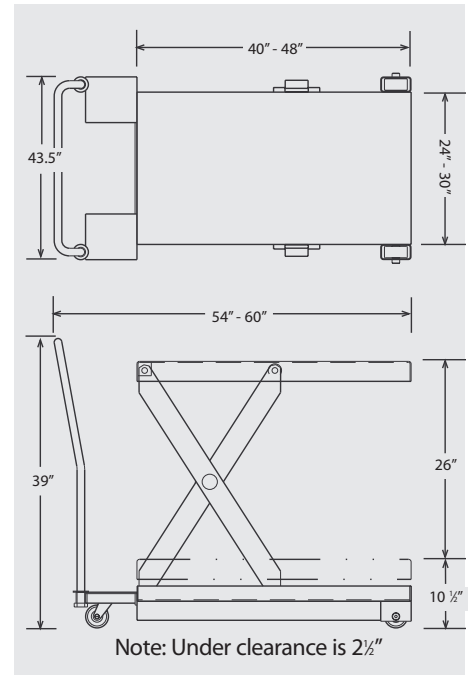


Model	Capacity	Vertical Travel	Height Min	Height Max	Standard Platform	Max Platform	Rise Time Seconds	HP	Voltage Phase/Hertz	Weight (lb) STD Platform
LL05.5-26	550	26"	5½"	31½"	20" x 36"	36" x 60"	9	1/2	115/1/60	240
LL1.1-26	1100	26"	5½"	31½"	20" x 36"	36" x 60"	21	1/2	115/1/60	250
LL1.5-35	1500	35"	6¼"	41¼"	24" x 48"	36" x 60"	32	1/2	115/1/60	450

BACKSAVER LITE PORTABLE



Packed with all the features of our stationary lifts, Southworth Backsaver Lite Portables feature a small footprint along with four easy rolling 5" phenolic casters for unmatched maneuverability. The internal DC power unit with intergral charger features push button control to quickly and gently raise and lower loads. Units also feature comfort grip handles, corner bumpers and a center mounted positive floor lock.

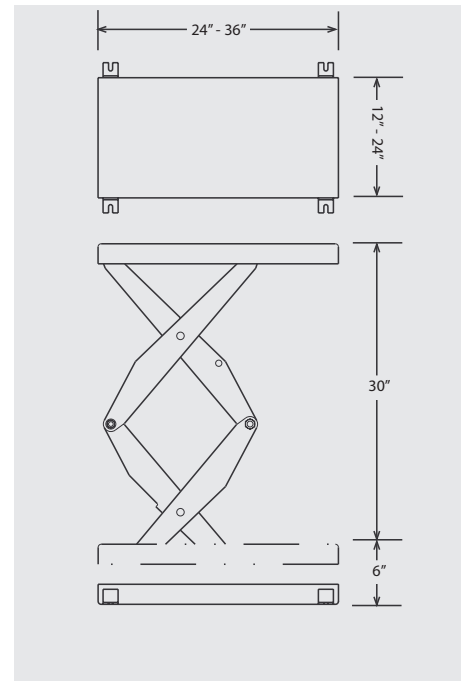


Model	Capacity	Vertical Travel	Height Min	Height Max	Standard Platform	Max Platform	Rise Time Seconds	HP	Voltage Phase/Hertz	Weight (lb) STD Platform
CLL05.5-26	550	26"	10½"	36½"	24" x 40"	30" x 48"	7	1/2	12 Volt DC	315
CLL1.1-26	1100	26"	10½"	36½"	24" x 40"	30" x 48"	13	1/2	12 Volt DC	325

BACKSAVER LITE COMPACT



Compact versions of Backsaver Lite models, Backsaver Lite Compacts feature a double scissor mechanism to provide a full 36" of lifting height in a very small 12" x 24" footprint. Oversize platforms to 24" x 36" are available.



Model	Capacity	Vertical Travel	Height Min	Height Max	Standard Platform	Max Platform	Rise Time Seconds	HP	Voltage Phase/Hertz	Weight (lb) STD Platform
LS05-30	500	30"	6"	36"	12" x 24"	12" x 24"	20	1/2	115/1/60	175
LS05-30W	500	30"	6"	36"	16" x 24"	24" x 36"	20	1/2	115/1/60	200
LS1-30	1000	30"	6"	36"	16" x 24"	24" x 36"	20	1/2	115/1/60	200

ELEVATION STATION



Elevation Station with smooth plastic laminate side up

Safe low voltage foot switches

The Elevation Station is a light duty elevating work station - a tool for productivity. You can effortlessly adjust the height with either of the dual footswitches, pre-wired at opposite corners of the base frame for operator convenience. The drive screw actuator means that it is clean running, no oil, nothing to spill and direct acting -- power up and power down with precise control.

This work station comes with a removable and reversible platform top. The 1" thick platform is an insert and sets down into the steel frame. It comes with a top that is a smooth plastic laminate on one side and the other side is a rugged nonslip plastic surface. The platform insert can also be replaced with a customer supplied material like plastic, UHMW, wood, stainless steel or other material suited for their special application. Changing platform tops is as easy as lifting it up and flipping it over to use the platform side you want or replacing it with a new material top.

The elevation station has no assembly required - just uncrate it and you are ready to go.



Simply flip the top over and you have a black non-slip plastic surface.

Lifting Capacity	200 lb. uniform load
Sustaining capacity.....	300 lb. uniform load
Platform size overall	25-1/2" x 49-1/2"
Platform size insert.....	23-1/2" x 47"
Lowered Height	24"
Raised Height.....	40"
Vertical Travel.....	16"
Linear Actuator.....	1/10 HP, 24 Volt DC
Primary Voltage	115/1/60 with a 6' power cord

SOUTHWORTH

For additional information or for a quote on the Elevation Station please call 800-743-1000 and ask for Sales. This item is IN-STOCK and ready to ship.

MATERIALS HANDLING EQUIPMENT for Food, Pharmaceutical & Washdown Applications

**Available in Stainless Steel and Special Finishes
to Meet Your Material Handling Needs.**



Southworth stainless steel equipment is designed to withstand the rigorous sanitation requirements of food processing, chemical, and pharmaceutical industries. These products allow you to make your material handling applications faster, safer, and easier while meeting your various maintenance needs.



Stainless Steel Lift Tables



For applications that require sanitary washdown, Southworth can provide stainless steel or corrosion resistant coated machines. Stainless steel tables are often required in the food or pharmaceutical industries, but they also suit many other material handling needs.



They are available in two capacities, 2500 lbs and 4000 lbs, and will provide years of trouble free service.



Model Number	Capacity Lbs.	Platform	Lowered Height	Raised Height	Raised Time	Lowering Time	Primary Voltage	Control	Shipping Weight Lbs.
SSLS2.5-27	2500	42" x 48"	9-1/4"	36"	30 secs.	24 secs.	115/1/60	Footswitch	1000
SSLS4-27	4000	42" x 48"	9-1/4"	36"	34 secs.	24 secs.	115/1/60	Footswitch	1100

Options available:

- Primary Voltage 460/3/60.
- Upper or Lower Limitswitch.
- 42" x 48" Manual Turntable (adds approximately 2" to the low height).
- 48" x 48" Manual Turntable (adds approximately 2" to the low height).
- Food Grade Oil

Stainless Steel Spring-Actuated PalletPal



Stainless steel spring-actuated PalletPal is ideal for most applications. With inherent stability and no power sources or connections, the fully automated mechanical PalletPal is virtually maintenance-free.

The turntable is easily rotated even when fully loaded and allows for near-side loading and unloading (the faster, safer and easier way) without walking around the unit.



Model Number	Capacity Lbs.	Lowered Height	Raised Height	Shipping Weight Lbs.
SSPPL	400-4500	9-1/2"	30-1/2"	615

Galvanized PalletPal is also available.

Floor Height Stainless Steel Lift Table

The stainless steel pan style platform lowers flat to the floor, allowing easy access with hand pallet trucks or wheeled carts, containers or tubs. The rugged industrial grade hydraulic cylinders provide smooth movement throughout the travel range of 36.5" allowing the operator to position the load to a comfortable working height. The narrow side frames allow operators to get up close to the load which minimizes reachover, and lower back extension. The clean, simple design facilitates easy cleanup or washdown.



The elastomeric front edge protects against toe injury.



Model Number	Capacity Lbs.	Platform	Lowered Height	Raised Height	Raised Time	Lowering Time	Primary Voltage	Control	Shipping Weight Lbs.
SSFH2.5-37	2500	44" x 48"	1/2"	37"	20 secs.	8 secs.	115/1/60	Footswitch	950

Options available:

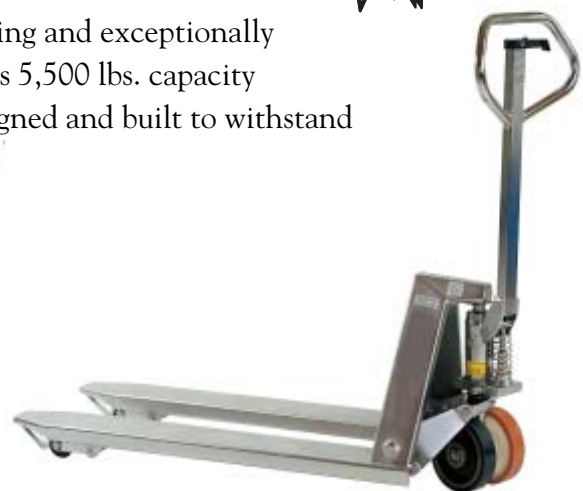
- Primary Voltage 460/3/60.
- Upper or Lower Limitswitch.
- Food Grade Oil

Stainless Steel Pallet Truck

Southworth, known for its reliability, now offers smooth handling and exceptionally maneuverable stainless steel hand trucks. Every feature, from its 5,500 lbs. capacity to its efficient operation and high level of serviceability, is designed and built to withstand the stresses of your work environment.

This pallet jack is fabricated entirely from stainless steel.

The ergonomic handle is arranged to provide handle thickness and an angled shape to deliver great leverage and fatigue-free operation.



Model Number	Capacity Lbs.	Lift Height	Low Height	Fork Length	Turning Angle	Fork Width	Individual Fork Width	Shipping Weight Lbs.
SSPT	5500	7.5"	2.9"	48"	230 degrees	27"	6.5"	150

Galvanized Pallet Truck is also available.

SOUTHWORTH VERTICAL CONVEYORS



An Economical Approach to the Efficient Use of Vertical Space

Southworth Vertical Reciprocating Conveyors are ideal for moving materials to and from mezzanines, lofts, basements, and upper floors. They can also provide multi-level automated material flow capability when fitted with carrier-mounted conveyors. Because they require no pits or penthouses, vertical conveyors can be installed without costly building modifications.

Exclusive Quality features of Southworth Vertical Conveyers

Posi-Stop -

Southworth's exclusive carrier brake is set in bearing supports to prevent freezing or sticking and to assure instant response.

Replaceable, Non-metallic Wear Rings -

Extends cylinder life by eliminating metal-to-metal contact between rod stabilizing rings and cylinder walls.

Safety Stops Prevent Overtravel -

Solid welded stops in mast assembly provide positive control even in the event of limit switch malfunction.

Extra-Rigid Truss Design Masts -

Angled cross members increase strength, minimize twisting and deflection for a more solid platform.

Replaceable Guide Wheels -

No torching or cutting; can be replaced in minutes with ordinary hand tools.

Factory Tested -

All internal wiring factory installed and the completed lift is weight tested. Full Southworth 1-Year Warranty.

Easy Cylinder and Seal Replacements -

The rod can be removed without destruction of the cylinder.

Hard Chromed Rods -

Provide smoother action, reduced seal wear, and extends life.



Options and Accessory Equipment

RAM Stop Assembly With Pressure Switch - For positive platform stability while loading/unloading at the upper landing.

Stabilization Chains - For use with oversize width platforms. Stabilizes platform while loading/unloading.

Non-Standard Splice Heights - To ease handling and installation in tight spots.

Larger Size Power Units - For faster speeds.

Single-Phase Power Units - 1 1/2 HP, 115/230/1/60 primary voltage where three-phase power is not available.

Diamond Carrier Plate - Non-skid working surface.

Landing Enclosures, Safety Screens, And Interlocks - Electromechanical interlocks and screens as required by ANSI B20.1.

Mini Mast - For sites with limited floor space to allow for maximum platform.

Carrier/Carriage Safety Lights And Alarms - For an added measure of safety.

Carrier-Mounted Safety Rails - Either pipe rails or snap chains; pipe rails are permanently attached or removable; snap chains should be used on sides requiring access.

Carrier-Mounted Side Panel - 6' high and full width of platform as standard.

Loading Ramps - Custom fabricated in grades to meet customer requirements.

Modified Designs - In addition to the options shown, Southworth can modify designs or add additional options to meet specific, unique application requirements.

Field Supervision of Installation - Factory trained representatives available nationwide.

Southworth Specification Considerations

Use the worksheet below to determine the exact specification requirements for your application.

Machine Requirements

1. Capacity

Determine capacity desired based on heaviest load, plus load handling equipment.

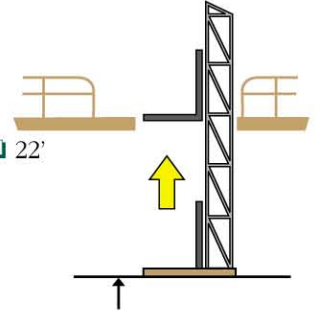
- ☐ 1,000 lbs.
- ☐ 2,000 lbs.
- ☐ 3,000 lbs.
- ☐ 4,000 lbs.



3. Vertical Travel

This is the floor to floor distance. (Add 6" safety cushion).

- ☐ 6' ☐ 10' ☐ 14' ☐ 18' ☐ 22'
- ☐ 7' ☐ 11' ☐ 15' ☐ 19'
- ☐ 8' ☐ 12' ☐ 16' ☐ 20'
- ☐ 9' ☐ 13' ☐ 17' ☐ 21'

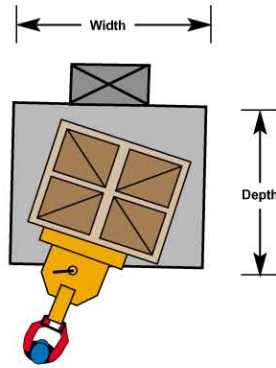


2. Platform Size

Determine size based on maximum load dimensions. Allow for foreseeable future load requirements and for maneuvering space.

Platform Depth Platform Width

- ☐ 36" ☐ 36"
- ☐ 42" ☐ 42"
- ☐ 48" ☐ 48"
- ☐ 54" ☐ 54"
- ☐ 60" ☐ 60"
- ☐ 72" ☐ 72"



4. Speed/Power

STANDARD LIFT SPEED (fpm)				
CAP.	1000	2000	3000	4000
3 PHASE	21	21	21	15
1 PHASE	13	13	13	9

5. Estimated Annual Cycles

Cycles per hour x hours per day x days per week x weeks per year, where one cycle is full up and full down.

_____ hours x _____ days x _____ weeks per year = _____

Facilities Requirements

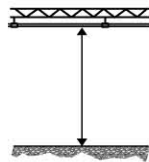
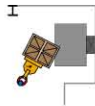
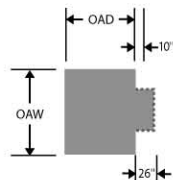
6. Floor Space

Allow for footprint based on platform size, mast and enclosures at all levels. Note that enclosures should be positioned approximately 3" from platform.

Add maneuvering space needed for lift or access for loading/unloading equipment; also clearance for swing gate(s).

OAW + 6" _____

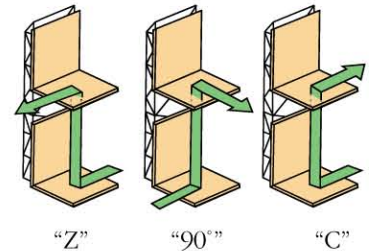
OAD + Mast + 6" _____



8. Traffic Pattern

Determine best and most efficient loading and unloading traffic pattern.

Traffic Pattern _____



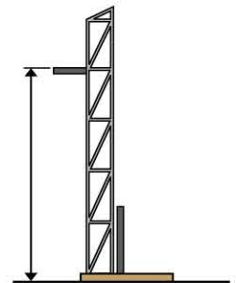
9. Machine Tie-Off

Mast must be tied off at least once near top. Enter height of highest tie-off point.

_____ ft.

10. Loading Method*

- ☐ Forktruck
- ☐ Electric Walkie
- ☐ Hand Pallet Jack
- ☐ Other _____



7. Clearance Height

Measure from floor to maximum unobstructed height available. Be sure to consider beams, piping, wireways, and other obstructions.

_____ ft.

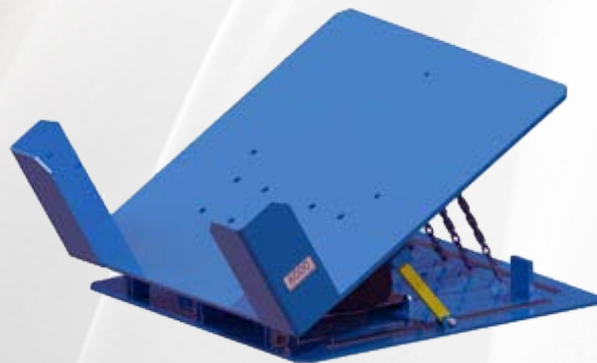
Machine Requirements

- 1. Capacity _____ lbs.
- 2. Platform Size _____ " Depth _____ " Width
- 3. Vertical Travel _____ ' (including 6" cushion)
- 4. Speed/Power _____ 3 phase _____ 1 phase
- 5. Annual Cycles _____ per year

Facility Requirements

- 6. Floor Space _____ OAW _____ OAD
- 7. Clearance Height _____ ft.
- 8. Traffic Pattern _____
- 9. Machine Tie-Off _____ ft.
- 10. Loading Method _____

* NOTE: Alignment of platform at the upper landing may change slightly when load is added due to compression of hydraulic fluid, etc. Please indicate method of loading and unloading at the upper landing, i.e., fork truck, pallet jack, conveyor, etc., and consult factory for information on alignment variation under load.



HYDRAULIC SCISSOR LIFTS

2,000 to 10,000 lb. capacity



FEATURES

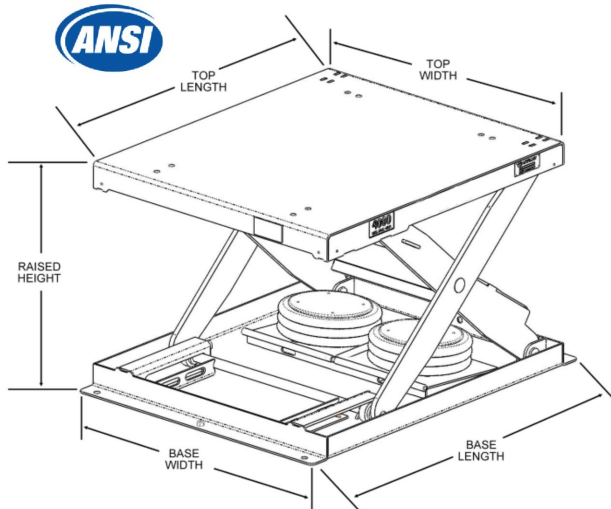
- **Construction:** High-tensile cut steel plate
- **Motor:** Continuous cycle (not intermittent-duty cycle of 5 to 10 minutes)
- **Cylinders:** Hard chrome steel with velocity safety fuses
- **Pivot Points:** Self-lubricating aircraft bushings
- Electric trip bar, internal power packs, casters and other options available
- Other platform sizes available

Model Number	Capacity (lbs.)	Base/Platform Size	Lowered Height	Lift Height	Raised Height	Lift Time (Seconds)	Motor (HP)	Shipping Wt. Approx. (lbs.)
Maximum Platform Size 48" x 58"								
ST-OMS-2436-2	2,000	24" x 36"	7"	24"	31"	18	1	420
ST-OMS-2436-4	4,000	24" x 36"	9"	24"	33"	25	1	610
Maximum Platform Size 48" x 72"								
ST-OMS-2448-2	2,000	24" x 48"	7"	30"	37"	20	1	540
ST-OMS-2448-4	4,000	24" x 48"	9"	30"	39"	40	1	740
ST-OMS-3048-6	6,000	30" x 48"	9"	30"	39"	60	1	860
ST-OMS-3648-8	8,000	36" x 48"	12"	30"	42"	27	3	1,000
ST-OMS-3648-10	10,000	36" x 48"	12"	30"	42"	33	3	1,100
Maximum Platform Size 48" x 88"								
ST-OMS-2460-2	2,000	24" x 60"	7"	40"	47"	25	1	700
ST-OMS-2460-4	4,000	24" x 60"	9"	40"	49"	50	1	890
ST-OMS-3060-6	6,000	30" x 60"	9"	40"	49"	74	1	1,050
ST-OMS-3660-8	8,000	36" x 60"	12"	40"	52"	33	3	1,100
ST-OMS-3660-10	10,000	36" x 60"	12"	40"	52"	42	3	1,225
Maximum Platform Size 48" x 102"								
ST-OMS-2472-2	2,000	24" x 72"	8"	48"	56"	35	1	900
ST-OMS-2472-4	4,000	24" x 72"	9"	48"	57"	70	1	1,100
ST-OMS-3072-6	6,000	30" x 72"	9"	48"	57"	105	1	1,325
ST-OMS-3672-8	8,000	36" x 72"	12"	48"	60"	46	3	1,400
ST-OMS-3672-10	10,000	36" x 72"	12"	48"	60"	53	3	1,450
Maximum Platform Size 48" x 108"								
ST-OMS-2488-2	2,000	24" x 88"	8"	59"	67"	40	1	950
ST-OMS-2488-4	4,000	24" x 88"	9"	59"	68"	80	1	1,200
ST-OMS-3088-6	6,000	30" x 88"	9"	59"	68"	120	1	1,360
ST-OMS-3688-8	8,000	36" x 88"	12"	59"	71"	53	3	1,560
ST-OMS-3688-10	10,000	24" x 88"	12"	59"	71"	67	3	1,640

PNEUMATIC SCISSOR LIFTS

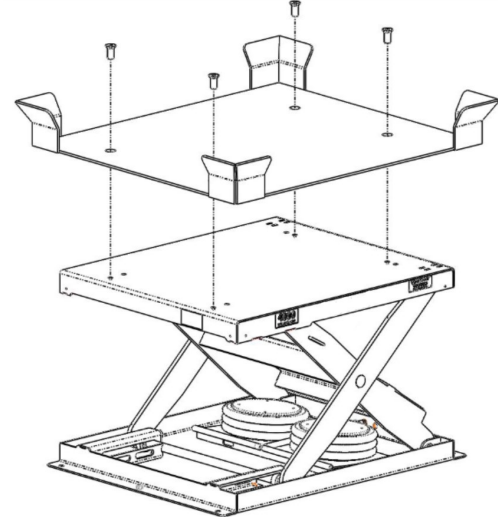
2,000 to 8,000 lb. capacity

DIMENSIONS



BOLT-ON TOP

Shown with optional corner locators.



Model Number	Load Capacity	Base Size W x L	Raised Height	Lowered Height	Travel	Top Size W x L	Shipping Weight
ST010-3648	2,000 lbs.	36" x 48"	32¼"	8¼"	24"	36" x 48"	650 lbs.
ST011-4248	4,000 lbs.	42" x 48"	32¼"	8¼"	24"	42" x 48"	810 lbs.
ST012-4848	6,000 lbs.	48" x 48"	36"	12"	24"	48" x 48"	1,150 lbs.
ST013-4848	8,000 lbs.	48" x 48"	36"	12"	24"	48" x 48"	1,210 lbs.
ST014-4350	6,000 lbs.	43" x 50"	28"	4"	24"	43" x 50"	640 lbs.
ST014-2448	2,000 lbs.	24" x 48"	32¼"	8¼"	24"	24" x 48"	540 lbs.

FEATURES AND BENEFITS

- Backed by industry-best **5-year warranty** for all mechanical/structural components and 2-year warranty for all pneumatic components
- Built to **ANSI MH29.1-2012** safety standards
- Completely air-operated system that eliminates the cost and maintenance of a dedicated hydraulic system
- Can be operated using most existing plant air systems
- Modular design capable of multiple configurations and integration of tilt or rotate mechanisms
- Built-in service block for safe and secure maintenance

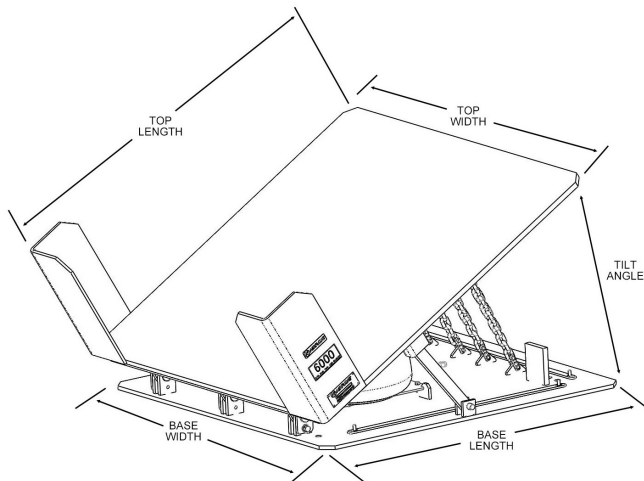
OPTIONS

- Optional Foot Controls (APS5020-0100)** or **Pedestal-mounted Hand Controls (APS5010-0100 or APS5010-0500)** [with "dirt leg" sediment trap]
- Custom Tops (ST5020 Series)** — Bolt-on structural plate steel tops sized to fit your load requirements. Available in incremental sizes
- Corner Locators (ST5021 Series)** — for retaining load on top and assisting forklift loading
- Debris Skirt (ST5010 Series)**— Rugged accordion skirt designed to prevent debris from damaging the lift mechanism
- Riser Base (ST5030 Series)** — Available 3", 6" or 10" riser base with fork pockets for easy relocation

PNEUMATIC TILT TABLES

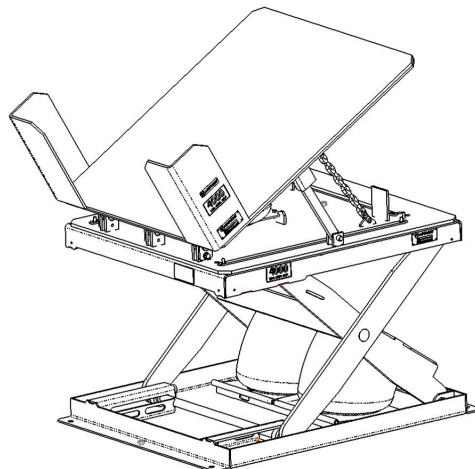
2,000, 4,000 and 6,000 lb. capacities

DIMENSIONS



MODULAR DESIGN

Can be bolted atop a Safebilt lift table (not included)



2,000 lb. Capacity Tilts

MODEL NUMBER	TILT CAPACITY	BASE SIZE (W x L)	TOP SIZE (W x L)	DOWN HEIGHT	TILT ANGLE
ST020-4444	2,000 lbs. (909 kg)	36" x 44" (914 x 1118 mm)	44" x 44" (1118 x 1118 mm)	5-7/8" (149 mm)	30°
ST020-4450	2,000 lbs. (909 kg)	36" x 44" (914 x 1118 mm)	44" x 50" (1118 x 1270 mm)	5-7/8" (149 mm)	30°
ST020-4456	2,000 lbs. (909 kg)	36" x 44" (914 x 1118 mm)	44" x 56" (1118 x 1422 mm)	5-7/8" (149 mm)	30°
ST020-5044	2,000 lbs. (909 kg)	36" x 44" (914 x 1118 mm)	50" x 44" (1270 x 1118 mm)	5-7/8" (149 mm)	30°
ST020-5050	2,000 lbs. (909 kg)	36" x 44" (914 x 1118 mm)	50" x 50" (1270 x 1270 mm)	5-7/8" (149 mm)	30°
ST020-5056	2,000 lbs. (909 kg)	36" x 44" (914 x 1118 mm)	50" x 56" (1270 x 1422 mm)	5-7/8" (149 mm)	30°
ST020-5644	2,000 lbs. (909 kg)	36" x 44" (914 x 1118 mm)	56" x 44" (1422 x 1118 mm)	5-7/8" (149 mm)	30°
ST020-5650	2,000 lbs. (909 kg)	36" x 44" (914 x 1118 mm)	56" x 50" (1422 x 1270 mm)	5-7/8" (149 mm)	30°
ST020-5656	2,000 lbs. (909 kg)	36" x 44" (914 x 1118 mm)	56" x 56" (1422 x 1422 mm)	5-7/8" (149 mm)	30°
ST020-6244	2,000 lbs. (909 kg)	36" x 44" (914 x 1118 mm)	62" x 44" (1575 x 1118 mm)	5-7/8" (149 mm)	30°
ST020-6250	2,000 lbs. (909 kg)	36" x 44" (914 x 1118 mm)	62" x 50" (1575 x 1270 mm)	5-7/8" (149 mm)	30°
ST020-6256	2,000 lbs. (909 kg)	36" x 44" (914 x 1118 mm)	62" x 56" (1575 x 1422 mm)	5-7/8" (149 mm)	30°
ST021-4444	2,000 lbs. (909 kg)	36" x 44" (914 x 1118 mm)	44" x 44" (1118 x 1118 mm)	5-7/8" (149 mm)	45°
ST021-4450	2,000 lbs. (909 kg)	36" x 44" (914 x 1118 mm)	44" x 50" (1118 x 1270 mm)	5-7/8" (149 mm)	45°
ST021-4456	2,000 lbs. (909 kg)	36" x 44" (914 x 1118 mm)	44" x 56" (1118 x 1422 mm)	5-7/8" (149 mm)	45°
ST021-5044	2,000 lbs. (909 kg)	36" x 44" (914 x 1118 mm)	50" x 44" (1270 x 1118 mm)	5-7/8" (149 mm)	45°
ST021-5050	2,000 lbs. (909 kg)	36" x 44" (914 x 1118 mm)	50" x 50" (1270 x 1270 mm)	5-7/8" (149 mm)	45°
ST021-5056	2,000 lbs. (909 kg)	36" x 44" (914 x 1118 mm)	50" x 56" (1270 x 1422 mm)	5-7/8" (149 mm)	45°
ST021-5644	2,000 lbs. (909 kg)	36" x 44" (914 x 1118 mm)	56" x 44" (1422 x 1118 mm)	5-7/8" (149 mm)	45°
ST021-5650	2,000 lbs. (909 kg)	36" x 44" (914 x 1118 mm)	56" x 50" (1422 x 1270 mm)	5-7/8" (149 mm)	45°
ST021-5656	2,000 lbs. (909 kg)	36" x 44" (914 x 1118 mm)	56" x 56" (1422 x 1422 mm)	5-7/8" (149 mm)	45°
ST021-6244	2,000 lbs. (909 kg)	36" x 44" (914 x 1118 mm)	62" x 44" (1575 x 1118 mm)	5-7/8" (149 mm)	45°
ST021-6250	2,000 lbs. (909 kg)	36" x 44" (914 x 1118 mm)	62" x 50" (1575 x 1270 mm)	5-7/8" (149 mm)	45°
ST021-6256	2,000 lbs. (909 kg)	36" x 44" (914 x 1118 mm)	62" x 56" (1575 x 1422 mm)	5-7/8" (149 mm)	45°



2230 Brush College Rd., Decatur, IL 62526
Phone: 217-423-6001
Email: sales@alignprod.com

PNEUMATIC TILT TABLES (CONT.)

4,000 lb. Capacity Tilts

MODEL NUMBER	TILT CAPACITY	BASE SIZE (W x L)	TOP SIZE (W x L)	DOWN HEIGHT	TILT ANGLE
ST022-4450	4,000 lbs. (1818 kg)	42" x 48" (1067 x 1219 mm)	44" x 50" (1118 x 1270 mm)	5-7/8" (149 mm)	30°
ST022-4456	4,000 lbs. (1818 kg)	42" x 48" (1067 x 1219 mm)	44" x 56" (1118 x 1422 mm)	5-7/8" (149 mm)	30°
ST022-5050	4,000 lbs. (1818 kg)	42" x 48" (1067 x 1219 mm)	50" x 50" (1270 x 1270 mm)	5-7/8" (149 mm)	30°
ST022-5056	4,000 lbs. (1818 kg)	42" x 48" (1067 x 1219 mm)	50" x 56" (1270 x 1422 mm)	5-7/8" (149 mm)	30°
ST022-5650	4,000 lbs. (1818 kg)	42" x 48" (1067 x 1219 mm)	56" x 50" (1422 x 1270 mm)	5-7/8" (149 mm)	30°
ST022-5656	4,000 lbs. (1818 kg)	42" x 48" (1067 x 1219 mm)	56" x 56" (1422 x 1422 mm)	5-7/8" (149 mm)	30°
ST022-6250	4,000 lbs. (1818 kg)	42" x 48" (1067 x 1219 mm)	62" x 50" (1575 x 1270 mm)	5-7/8" (149 mm)	30°
ST022-6256	4,000 lbs. (1818 kg)	42" x 48" (1067 x 1219 mm)	62" x 56" (1575 x 1422 mm)	5-7/8" (149 mm)	30°
ST023-4450	4,000 lbs. (1818 kg)	42" x 48" (1067 x 1219 mm)	44" x 50" (1118 x 1270 mm)	7-3/8" (187 mm)	45°
ST023-4456	4,000 lbs. (1818 kg)	42" x 48" (1067 x 1219 mm)	44" x 56" (1118 x 1422 mm)	7-3/8" (187 mm)	45°
ST023-5050	4,000 lbs. (1818 kg)	42" x 48" (1067 x 1219 mm)	50" x 50" (1270 x 1270 mm)	7-3/8" (187 mm)	45°
ST023-5056	4,000 lbs. (1818 kg)	42" x 48" (1067 x 1219 mm)	50" x 56" (1270 x 1422 mm)	7-3/8" (187 mm)	45°
ST023-5650	4,000 lbs. (1818 kg)	42" x 48" (1067 x 1219 mm)	56" x 50" (1422 x 1270 mm)	7-3/8" (187 mm)	45°
ST023-5656	4,000 lbs. (1818 kg)	42" x 48" (1067 x 1219 mm)	56" x 56" (1422 x 1422 mm)	7-3/8" (187 mm)	45°
ST023-6250	4,000 lbs. (1818 kg)	42" x 48" (1067 x 1219 mm)	62" x 50" (1575 x 1270 mm)	7-3/8" (187 mm)	45°
ST023-6256	4,000 lbs. (1818 kg)	42" x 48" (1067 x 1219 mm)	62" x 56" (1575 x 1422 mm)	7-3/8" (187 mm)	45°
ST026-5850*	4,000 lbs. (1818 kg)	39" x 48" (991 x 1219 mm)	58" x 50" (1473 x 1270 mm)	6-7/16" (149 mm)	30°

* Non-invasive tilt model

6,000 lb. Capacity Tilts

MODEL NUMBER	TILT CAPACITY	BASE SIZE (W x L)	TOP SIZE (W x L)	DOWN HEIGHT	TILT ANGLE
ST024-5050	6,000 lbs. (2727 kg)	48" x 48" (1219 x 1219 mm)	50" x 50" (1270 x 1270 mm)	6-1/8" (156 mm)	30°
ST024-5056	6,000 lbs. (2727 kg)	48" x 48" (1219 x 1219 mm)	50" x 56" (1270 x 1422 mm)	6-1/8" (156 mm)	30°
ST024-5650	6,000 lbs. (2727 kg)	48" x 48" (1219 x 1219 mm)	56" x 50" (1422 x 1270 mm)	6-1/8" (156 mm)	30°
ST024-5656	6,000 lbs. (2727 kg)	48" x 48" (1219 x 1219 mm)	56" x 56" (1422 x 1422 mm)	6-1/8" (156 mm)	30°
ST024-6250	6,000 lbs. (2727 kg)	48" x 48" (1219 x 1219 mm)	62" x 50" (1575 x 1270 mm)	6-1/8" (156 mm)	30°
ST024-6256	6,000 lbs. (2727 kg)	48" x 48" (1219 x 1219 mm)	62" x 56" (1575 x 1422 mm)	6-1/8" (156 mm)	30°
ST025-5050	6,000 lbs. (2727 kg)	48" x 48" (1219 x 1219 mm)	50" x 50" (1270 x 1270 mm)	7-5/8" (194 mm)	45°
ST025-5056	6,000 lbs. (2727 kg)	48" x 48" (1219 x 1219 mm)	50" x 56" (1270 x 1422 mm)	7-5/8" (194 mm)	45°
ST025-5650	6,000 lbs. (2727 kg)	48" x 48" (1219 x 1219 mm)	56" x 50" (1422 x 1270 mm)	7-5/8" (194 mm)	45°
ST025-5656	6,000 lbs. (2727 kg)	48" x 48" (1219 x 1219 mm)	56" x 56" (1422 x 1422 mm)	7-5/8" (194 mm)	45°
ST025-6250	6,000 lbs. (2727 kg)	48" x 48" (1219 x 1219 mm)	62" x 50" (1575 x 1270 mm)	7-5/8" (194 mm)	45°
ST025-6256	6,000 lbs. (2727 kg)	48" x 48" (1219 x 1219 mm)	62" x 56" (1575 x 1422 mm)	7-5/8" (194 mm)	45°

FEATURES AND BENEFITS

- 3/4" thick forklift-resistant top plate (4,000 lb. and 6,000 lb. models only)
- Air-actuated, no hydraulic maintenance concerns
- Optional hand or foot control, easily relocates
- Heavy-duty corner retainers
- Fully enclosed, no pinch points, heavy duty hinge
- Can bolt directly to lift table or stand alone

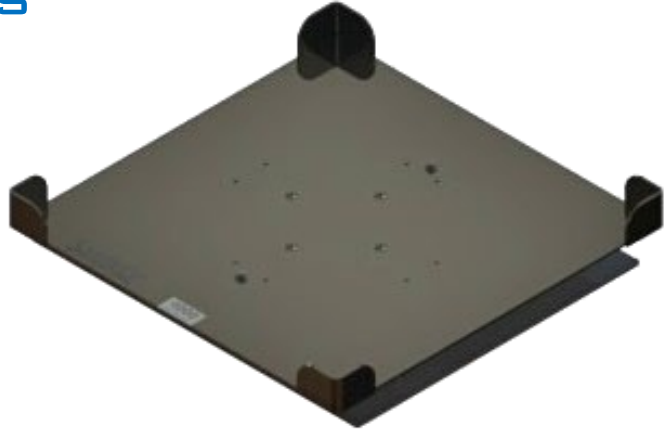
OPTIONS

- Pedestal-mounted Hand Controls (APS5010-0100 or APS5010-0500 [with "dirt leg" mounting])
- Foot Control (APS5020-0100 or APS5010-1100 [with "dirt leg" stand])
- Debris Skirt (ST5040 Series) — Made from heavy-duty vinyl-covered nylon with accordion-style pleats
- Adjustable Riser Base (ST5050 Series)

MECHANICAL ROTATES

FEATURES & BENEFITS

- Bolt-on or standalone operation
- Center slewing bearing outperforms cheaper wheels or rollers
- 360° continuous rotation in either direction
- Optional corner locators for easy load positioning
- Maximum table support



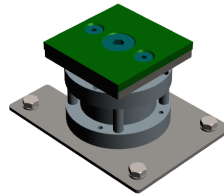
Model Number	Capacity	Top Width	Top Length	Base Width	Base Length	Height
ST030-3838	4,000 lbs.	38 in.	38 in.	42 in.	48 in.	4 in.
ST030-3842	4,000 lbs.	38 in.	42 in.	42 in.	48 in.	4 in.
ST030-3846	4,000 lbs.	38 in.	46 in.	42 in.	48 in.	4 in.
ST030-3850	4,000 lbs.	38 in.	50 in.	42 in.	48 in.	4 in.
ST030-3854	4,000 lbs.	38 in.	54 in.	42 in.	48 in.	4 in.
ST030-3858	4,000 lbs.	38 in.	58 in.	42 in.	48 in.	4 in.
ST030-3862	4,000 lbs.	38 in.	62 in.	42 in.	48 in.	4 in.
ST030-4242	4,000 lbs.	42 in.	42 in.	42 in.	48 in.	4 in.
ST030-4246	4,000 lbs.	42 in.	46 in.	42 in.	48 in.	4 in.
ST030-4250	4,000 lbs.	42 in.	50 in.	42 in.	48 in.	4 in.
ST030-4254	4,000 lbs.	42 in.	54 in.	42 in.	48 in.	4 in.
ST030-4258	4,000 lbs.	42 in.	58 in.	42 in.	48 in.	4 in.
ST030-4262	4,000 lbs.	42 in.	62 in.	42 in.	48 in.	4 in.
ST030-4646	4,000 lbs.	46 in.	46 in.	42 in.	48 in.	4 in.
ST030-4650	4,000 lbs.	46 in.	50 in.	42 in.	48 in.	4 in.
ST030-4654	4,000 lbs.	46 in.	54 in.	42 in.	48 in.	4 in.
ST030-4658	4,000 lbs.	46 in.	58 in.	42 in.	48 in.	4 in.
ST030-4662	4,000 lbs.	46 in.	62 in.	42 in.	48 in.	4 in.
ST030-5050	4,000 lbs.	50 in.	50 in.	42 in.	48 in.	4 in.
ST030-5054	4,000 lbs.	50 in.	54 in.	42 in.	48 in.	4 in.

Continued...

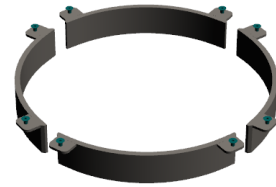
Model Number	Capacity	Top Width	Top Length	Base Width	Base Length	Height
ST030-5058	4,000 lbs.	50 in.	58 in.	42 in.	48 in.	4 in.
ST030-5062	4,000 lbs.	50 in.	62 in.	42 in.	48 in.	4 in.
ST030-5454	4,000 lbs.	54 in.	54 in.	42 in.	48 in.	4 in.
ST030-5458	4,000 lbs.	54 in.	58 in.	42 in.	48 in.	4 in.
ST030-5462	4,000 lbs.	54 in.	62 in.	42 in.	48 in.	4 in.
ST030-5858	4,000 lbs.	58 in.	58 in.	42 in.	48 in.	4 in.
ST030-5862	4,000 lbs.	58 in.	62 in.	42 in.	48 in.	4 in.
ST030-6262	4,000 lbs.	62 in.	62 in.	42 in.	48 in.	4 in.

OPTIONS

- Corner locators
- Pneumatic friction brake with hand or foot controls
- 90° or 180° spring lock pin with hand control
- Riser base with fork pockets



Friction Brake



90° Spring Lock Pin



Base System Includes

ST030-0003 Pneumatic Corner Tilt Table / 4000 lb Capacity / Any size pallet / 45 Degree Tilt

Product Details

**Pneumatic Corner Tilt Table /
4000 lb Capacity / Any size
pallet / 45 Degree Tilt**

ST030-0003



Specifications		
	Standard	Metric
Upper Capacity	4000 (lbs)	1818.18 (kgs)
Weight	920 (lbs)	418.182 (kgs)
Top Width	68 (in)	1727.2 (mm)
Top Length	68.5 (in)	1739.9 (mm)
Base Width	68 (in)	1727.2 (mm)
Base Length	68.5 (in)	1739.9 (mm)
Down Height	5.875 (in)	149.225 (mm)
Tilt Angle	45 °	
In Stock Lead Time	1 week	
Out of Stock Lead Time	4 weeks	



01.800.890.0799

www.AGgrupo.mx

contacto@aggrupo.mx

Chihuahua, Chihuahua